

Site Location and Roof Plan

Notes

- Proposed new trees
- Grassed and wildflower areas in accordance with the approved planting scheme
- 64.70 Proposed levels
- (65.00) Existing levels
- Bench positions
- Bollard Lighting positions

NOTE: levels are taken from previous SWA Site Plan drawing & need to be re-checked against more recent Millers proposals

NB at this proposal Sports Equipment Storage Containers comprising 2no 8ft x 20ft containers as shown on previous SWA planning-approved drawings have been OMITTED on basis of compensatory storage being provided within main building as now proposed

indicative line of neighbour access easement strip drawn 12.5m wide - impact to be considered further

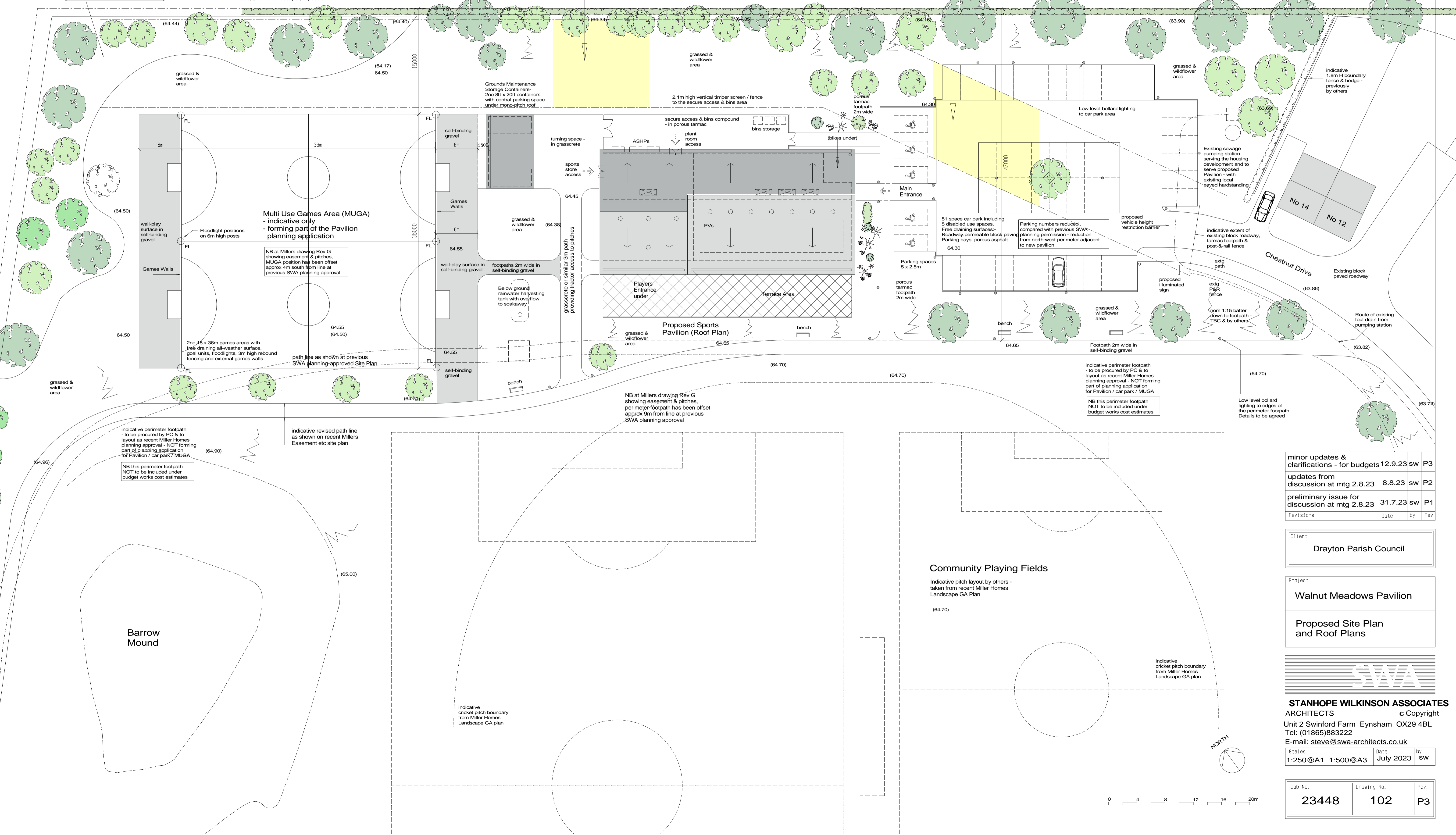
indicative line of neighbour access easement strip drawn 12.5m wide - impact to be considered further

Native scrub planting - as detailed and approved planting scheme by Miller Homes. Planting density to be increased to provide additional screening to the proposed MUGA and associated floodlighting

Existing boundary hedge and fence retained and reinforced with new planting as approved landscape proposals

Additional planting and trees to reinforce the boundary screening

Site Boundary Hedge - 1.8m high



Multi Use Games Area (MUGA)
- indicative only
- forming part of the Pavilion planning application

NB at Millers drawing Rev G showing easement & pitches. MUGA position has been offset approx 4m south from line at previous SWA planning approval

2no 16 x 36m games areas with free draining all-weather surface, goal units, floodlights, 3m high rebound fencing and external games walls

path line as shown at previous SWA planning-approved Site Plan

NB at Millers drawing Rev G showing easement & pitches. perimeter footpath has been offset approx 9m from line at previous SWA planning approval

indicative perimeter footpath - to be procured by PC & to layout as recent Miller Homes planning approval - NOT forming part of planning application for Pavilion / car park / MUGA

NB this perimeter footpath NOT to be included under budget works cost estimates

minor updates & clarifications - for budgets	12.9.23	sw	P3
updates from discussion at mtg	2.8.23	8.8.23	sw P2
preliminary issue for discussion at mtg	2.8.23	31.7.23	sw P1
Revisions	Date	by	Rev

Client
Drayton Parish Council

Project
Walnut Meadows Pavilion
Proposed Site Plan and Roof Plans



STANHOPE WILKINSON ASSOCIATES
ARCHITECTS c Copyright
Unit 2 Swinford Farm Eynsham OX29 4BL
Tel: (01865)883222
E-mail: steve@swa-architects.co.uk

Scales 1:250@A1 1:500@A3 Date July 2023 by sw

Job No.	Drawing No.	Rev.
23448	102	P3

