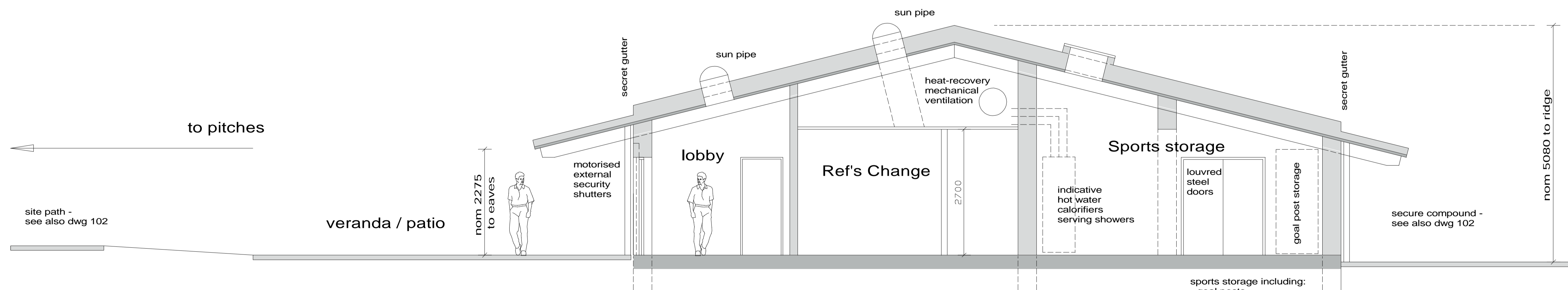
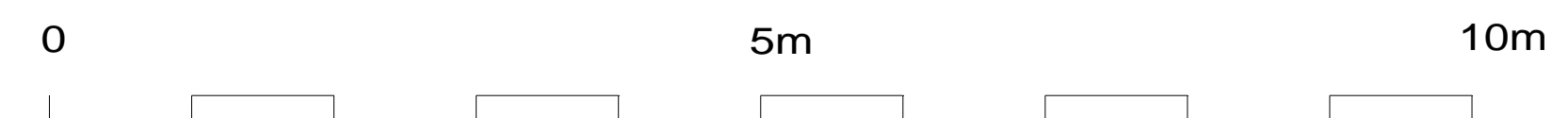


Section A



Section B



| | | | |
|--|---------|----|-----|
| minor updates | 8.9.23 | sw | P3 |
| updates from discussion at mtg 2.8.23 | 8.8.23 | sw | P2 |
| preliminary issue for discussion at mtg 2.8.23 | 31.7.23 | sw | P1 |
| Revisions | Date | by | Rev |

Client
Drayton Parish Council

Project
Walnut Meadows Pavilion

Proposed Indicative Building Sections A & B



STANHOPE WILKINSON ASSOCIATES
ARCHITECTS
Unit 2 Swinford Farm Eynsham OX29 4BL
Tel: (01865) 883222
E-mail: steve@swa-architects.co.uk

| | | |
|----------------------|---------|----|
| Scales | Date | by |
| 1:50 @ A1 1:100 @ A3 | July 23 | sw |

| | | |
|---------|-------------|------|
| Job No. | Drawing No. | Rev. |
| 23448 | 103 | P3 |